

# Take control of your rooms

The Cyviz Easy Server is a web application designed to run on a customer provided Microsoft Windows Server. It acts as a platform for centralized support and management of all Cyviz controlled systems.

By introducing an IT approach to system designs and processes, Cyviz is reinventing central support management and monitoring.

Built as a tool for operational excellence, the Cyviz Easy Server improves the user experience while reducing resources spent on management and support. With the Easy Server, your Support and IT teams gain full control of your systems. They can preemptively and globally manage and support your meeting rooms and control rooms portfolio.

The Cyviz software platform is standardized, configurable and upgradeable. All configurations and adjustments can be made in-house with more speed and efficiency. This reduces the need for unforeseen external support or re-programming costs.



## SYSTEM ILLUSTRATION

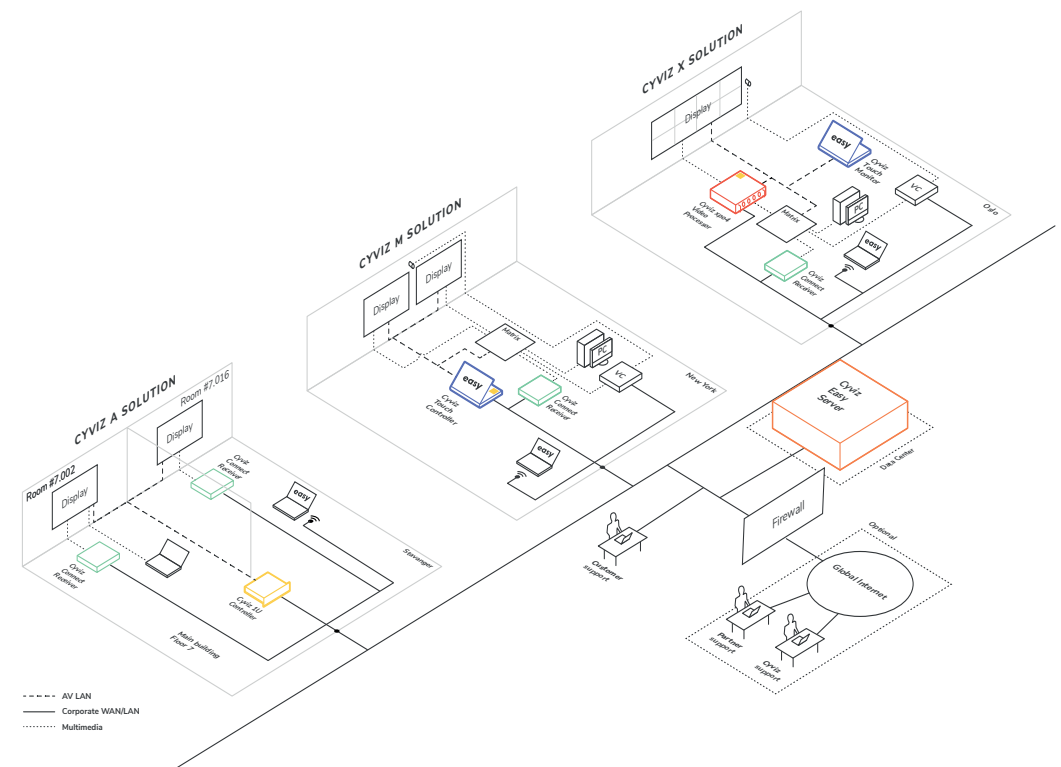
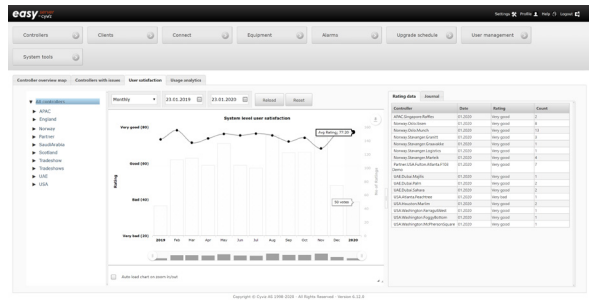


Illustration: Cyviz Easy Controllers are connected to a central Cyviz Easy Server

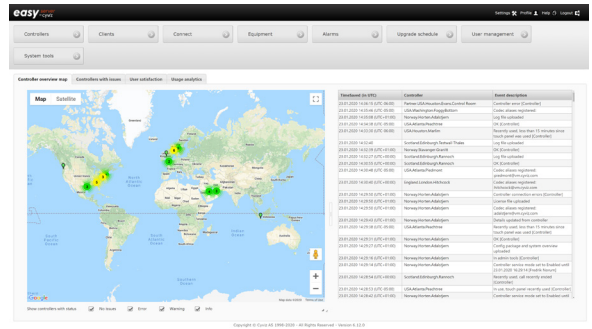
**GAIN INSIGHTS**

- A data-driven approach to room systems management
- Proven ROI through utilization and usage analytics
- Analytics that support resources allocation and help identify training needs



**OPERATIONAL EFFICIENCY FOR IT**

- A centralized dashboard and management overview
- Efficient remote support to resolve issues quickly
- Easy updates with centralized deployment
- Schedule upgrades during non-peak hours



**CREATE AN ORGANIZATIONAL IMPACT**

- Reduce support resources required and improve user satisfaction
- Anticipate maintenance and deliver timely support
- Higher room utilization and more productive meetings
- Happier end users



**ACCESS CONTROL**

	Built-in user catalogue	Microsoft Active Directory (AD)	HTTPS encryption
Authentication	●	●	●
Authorization (granted at function and/or controller level)	●	●	●

The Cyviz Easy Server web application also supports SSO towards Microsoft Azure AD and SAML 2.0.

<p><b>*NEW* Usage analytics</b></p>	<ul style="list-style-type: none"> <li>• Provides granular room and features usage insights</li> <li>• A tool to understand employees' needs and confidence in the systems</li> <li>• Identify features that require further training</li> <li>• Prove your room ROI</li> <li>• Understand and shape collaboration behaviors in your organization</li> </ul>
<p><b>Centralized equipment monitoring and overview</b></p>	<ul style="list-style-type: none"> <li>• Centralized overview of Cyviz Controllers and Cyviz Connect Receivers</li> <li>• Automatically monitor health status of controlled equipment</li> <li>• Email alerts when exceptions are detected</li> <li>• Manage multiple areas from a primary location</li> </ul>
<p><b>Remote support and diagnosing</b></p>	<ul style="list-style-type: none"> <li>• Remote technical support</li> <li>• Remote end user support</li> <li>• Direct communication with equipment</li> <li>• Advanced diagnostics and debugging tools</li> <li>• Remote access by Cyviz for escalated support issues</li> <li>• Cut onsite support costs and travel for support teams with different locations</li> </ul>
<p><b>Centralized upgrade of Cyviz software</b></p>	<ul style="list-style-type: none"> <li>• Easy deployment with central and automated distribution of software upgrades for Cyviz Controllers, Cyviz Connect Receivers and Cyviz Video Processors</li> <li>• Keeps track of controllers' location, software versions, technical description and automate the backup of critical files</li> </ul>
<p><b>User rating and feedback</b></p>	<ul style="list-style-type: none"> <li>• Keep track of end users' satisfaction over time</li> <li>• Proactive support based on real user experience</li> </ul>
<p><b>Management of client profiles for Cyviz Easy WindowsClient and Cyviz WebClient</b></p>	<ul style="list-style-type: none"> <li>• Management of client profiles for Cyviz Easy WindowsClient and Cyviz WebClient</li> </ul>
<p><b>Building management integration (BMS)</b></p>	<ul style="list-style-type: none"> <li>• The integration with BMS enables motion detectors and fire alarms to integral part of Cyviz solutions</li> </ul>

**About Cyviz**

Cyviz is a global technology provider for visual collaboration, meeting rooms, visualization and operations centers. Since 1998, Cyviz empowers the digital workforce, organizations and employees to connect, visualize, and collaborate on their critical data. Cyviz provides turnkey solutions that are easy to deploy, easy to operate, and easy to support. Today, Cyviz serves the Fortune 500, global enterprise and government customers that demand seamless integration of leading-edge technologies that engage people, encourage greater collaboration and accelerate decision-making.

Find out more on [www.cyviz.com](http://www.cyviz.com) or visit one of our Cyviz Experience Centers in Atlanta, Dubai, Jakarta, Houston, London, Oslo, Riyadh, Singapore, Stavanger or Washington DC.